

acer

PRODUCT SUMMARY

Aspire 5

Marketing Name

Aspire 5

Model Name

A514-55/A514-55G /A515-57/A515-57G/A515-57T/A515-57GT/ A517-53/A517-53G







Aspire 5

The highly versatile Acer Aspire 5 is powered by the latest 12th Gen Intel® Core™ i7 processors for multitasking and NVIDIA® graphics for accelerated photo and video editing performance. Maximize your productivity with performance-grade thermal solutions and comprehensive connectivity options.



Target Audience

Multi-task Users: Youtubers, Bloggers and University students

These users have a rational approach towards technology.

They're practical, function-driven, and tend to be more conventional in terms of device usage and consider computers as useful tools for getting things done. As such, a good all purpose laptop will be what they will be looking for.

They desire a powerful device with plenty of productivity to help them work efficiently so that they can put their time in good use.





1. Make. It. Happen.

The Aspire 5 is powered by the **latest 12th Gen Intel® Core™ i7 processors¹** for multitasking and productivity, featuring **dual-channel 32GB DDR4 memory,¹** and **expandable dual SSDs up to 2TB.¹** Accelerate photo and video editing with **NVIDIA® GeForce® MX550,¹** working seamlessly with **NVIDIA Optimus® technology** that automatically optimizes your device to offer the best performance or battery life depending on the application.



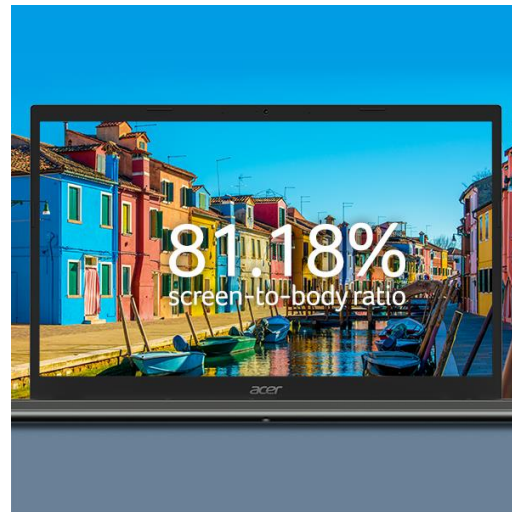
2. Keep Your Cool

Experience engineered solutions to maximize cooling with dual fans supporting **multiple cooling modes** and **dual copper thermal pipes.¹** Expel **up to 10%² more heat** with the air inlet keyboard to keep your cool when it counts.

1. Specifications may vary depending on model and/or region.

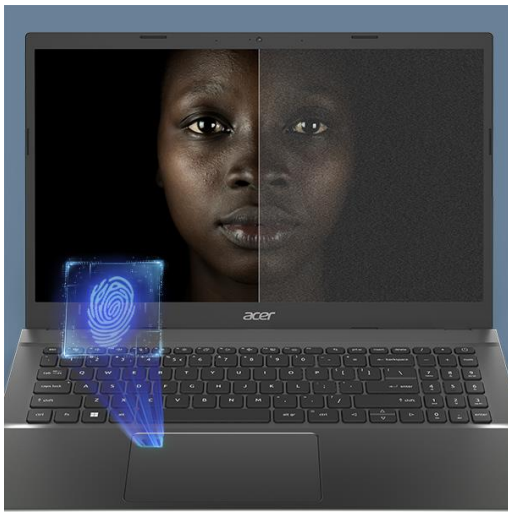
Based on Acer's internal lab's data.

2. Wi-Fi 6E-compatible devices are required to reach the stated speeds/benefits of Wi-Fi 6E (802.11ax).



3. Display Your Best

Create on the **FHD or QHD¹** display with optional **touch screen availability.** Boasting an **81.18% screen-to-body ratio¹** and **Acer Color Intelligence™**, and **Acer BlueLightShield™** for dynamic color optimization and viewing comfort.



4. The Smarts

With **Acer TNR Solution**, experience intelligent image noise reduction in low-light conditions. **Acer PurifiedVoice™** with **AI noise reduction¹** can actively suppress background noise for both users and is compatible with external headphones and mics, perfect for online courses or keeping in touch with family. The Aspire 5 also features a **720P HD** webcam and a **fingerprint reader** for convenient security.



5. The Connectivity

Featuring the next generation in connectivity: **Wi-Fi 6E^{1,3}** perfect for high-speed file sharing and smooth **4K streaming**, and **Bluetooth® 5.2**. And with a **Thunderbolt™ 4** port, connect two 4K displays for multitasking. Featuring three **USB Type-A ports** and one **HDMI 2.0**.

1. Specifications may vary depending on model and/or region.
2. Based on Acer's internal lab's data.
3. Wi-Fi 6E-compatible devices are required to reach the stated speeds/benefits of Wi-Fi 6E (802.11ax).



6. The Design

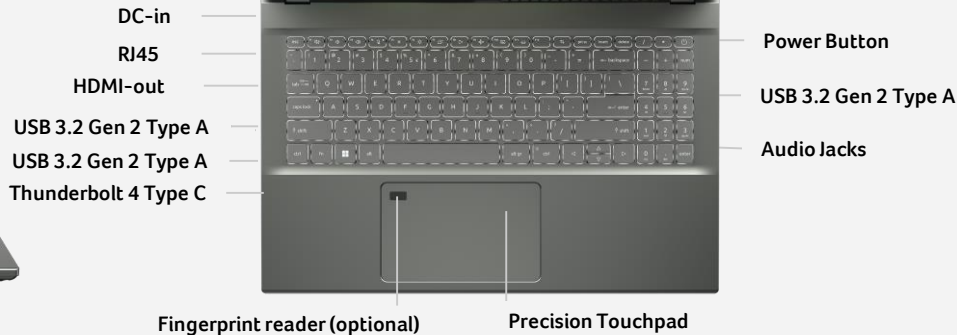
The Aspire 5 features a **metal cover** and an elevating hinge design with ergonomic features. Available in multiple colors to match your style, and includes an **optional backlit keyboard** so you can do more from wherever, whenever.



Webcam



Acer Logo



Project	W	L	H	Weight (kg)	Brightness (nits)	Screen to body ratio	Aspect ratio
14"	328.1mm	221.2mm	17.90mm	1.7	250-300	78.26%	16:9
15.6"	362.86mm	237.8mm	17.90mm	1.77	250-300	81.22%	
17"	402.1mm	257.85mm	19.9mm	2.2	250-300	81.18%	

	A Cover (Top)	B Cover (Screen)	C Cover (Keyboard)	D Cover (bottom)	Keycaps
Color	Europa_ADU: Steel Gray, Tigerlily Red, Active Blue, Haze Gold Ganymede_ADU: Steel Gray, Glacier Blue, Safari Gold Amalthea_ADU: Steel Gray	N/A	Steel Gray	Steel Gray	Backlit: Steel Gray Non-Backlit: Black
Material	Metal (MG-AL)	Plastic	Plastic	Plastic	Plastic
Finish	Sandblasted, Anodized	N/A	Polished	Polished	Polished

Aspire 5 – 14”

A514-55/A514-55G



Aspire 5 – 15”

A515-57/A515-57G/A515-57T/A515-57GT



Aspire 5 – 17”

A517-53/A517-53G





Microsoft®

Windows 11 Home

The most used, trusted, productive, and versatile OS for working, learning, developing, and playing

New Design and Tools

Get a fresh perspective

- Smooth animations, new buttons, toggles, and font
- Quickly organize open apps with Snap Layouts
- Rejuvenated Start, Taskbar, and Notification Center



Windows 11

12th Gen Intel® Core™ Processors

Intel's most scalable client architecture that adapts to you.

Game and multitask without compromise powered by the dynamic architecture of 12th Gen Intel Core mobile PCs.

Revolutionary new design with performance hybrid combines Performance-cores with Efficient-Cores, to enable you to chat, browse, stream, edit, record, and play.

- Up to 16 Cores – 8 performance cores/8 efficiency cores
- Up to 24 threads – 2X performance cores/1X efficiency cores
- Up to 30mb non-inclusive LL cache memory
- Dense & Highly Scalable
- Vector and AI instruction Support
- Wide Dynamic Range
- Intel Thread Director: Intelligence built directly into the core

Game without Limits

- **Intel® Thread Director** keeps your gaming free of interruptions – no need to worry about background tasks slowing you down.
- The perfect balance of **clock speed, cores and threads** to deliver performance for immersive experiences and low latency during competitive gameplay.
- **Smart performance management** automatically gives you a framerate boost during peak loads with **Intel® Turbo Boost Technology**.

Make it Yours

- Extended gaming mode keeps your battery life balanced so you can stay in the game without sacrificing framerates.
- Get gaming grade wireless internet **with Intel® Killer™ Wi-Fi 6E** technology that minimizes lag, latency and packet loss so you don't have to worry about your ping.
- Easily connect to your dream set-up with support for multiple 4K displays and keep your peripheral suite organized with **Thunderbolt™ 4**

intel®

CORE



Information is confidential and is based on release by Intel on document title

[6_Intel_Core_12th_Gen_ADL_Evo/Pre_Launch_647990_12th_Gen_PreLaunch_Overview_ConsProc_Sep'21/61-76. See notices and disclaimers for details.

Thunderbolt 4

Flexibility.

Delivers high-speed data transfer, outputs a video signal, and can deliver power to compatible devices (including charging a lightweight laptop) simultaneously.

Bandwidth.

40Gbps (gigabits per second) bidirectional bandwidth to move data between external storage quickly, and that up to five Thunderbolt devices can be connected for flexible device configurations—all powered by one port.

Versatile connectivity.

compatible with many connection standards, including previous versions of Thunderbolt™, USB, DisplayPort, and PCIe. The ports fit standard USB-C type connectors.



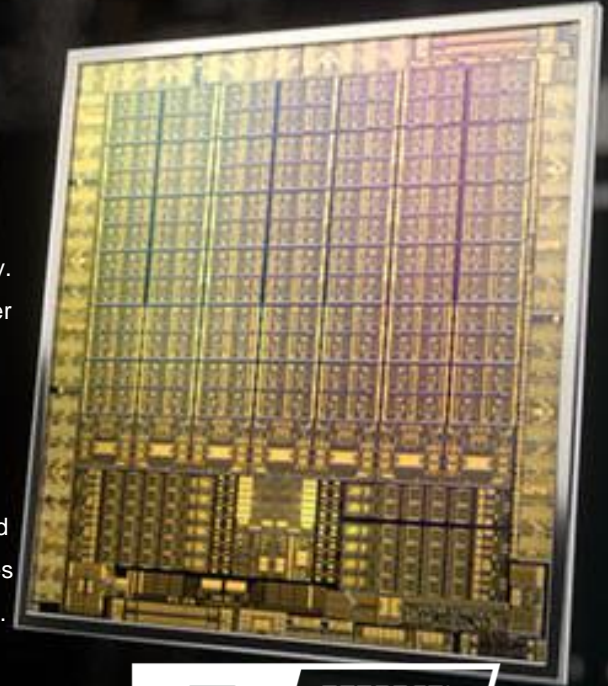
NVIDIA® RTX 2050 Series™ Graphics

GeForce RTX™ 2050 laptops deliver ray tracing and cutting-edge AI features. The RTX 2050 also works seamlessly with NVIDIA Optimus® technology to give you the perfect balance between long battery life and optimum performance.

RTX. IT'S ON. NVIDIA RTX is the most advanced platform for ray tracing and AI technologies that are revolutionizing the ways we play and create. Over 150 top games and applications use RTX to deliver realistic graphics or cutting-edge new AI features like NVIDIA DLSS and NVIDIA Broadcast. RTX is the new standard.

GET FASTER PERFORMANCE WITH NVIDIA DLSS. Get a performance boost with NVIDIA DLSS (Deep Learning Super Sampling). AI-specialized Tensor Cores on GeForce RTX GPUs give your games a speed boost with uncompromised image quality. This lets you crank up the settings and resolution for an even better visual experience.

VICTORY MEASURED IN MILLISECONDS. NVIDIA Reflex delivers the ultimate competitive advantage. The lowest latency. The best responsiveness. Acquire targets faster, react quicker, and increase aim precision through a revolutionary suite of technologies built to reduce and measure system latency for competitive games.



**GEFORCE®
RTX**

Information is confidential and is based on release by NVIDIA on document title [Partner GeForce RTX 2050 Laptop Messaging]

¹ Specifications may vary depending on official release. All models subject to availability.

NVIDIA® GeForce® MX550

ACCELERATED PERFORMANCE FOR WORK AND PLAY

The NVIDIA® GeForce MX550 graphics processor accelerates your laptop for work and play. Based on NVIDIA Turing architecture, with more CUDA Cores and with faster memory speeds than before, MX550 delivers faster photo editing, video editing, and gaming compared to the latest integrated graphics. It also works seamlessly with NVIDIA Optimus® technology to give you the perfect balance between long battery life and performance.

ACCELERATED PERFORMANCE FOR WORK AND PLAY

- Experience NVIDIA's Turing Architecture with more CUDA Cores than before
- Improve and accelerate photo and video editing with dedicated GPU hardware acceleration
- Get more done between battery charges with NVIDIA Optimus technology.
- Tap into easy driver updates and one-click game optimization with GeForce Experience™
- NVIDIA Encoder for advanced streaming capabilities

Note: Please use above NVIDIA's marketing message in communication.



Information is confidential and is based on release by NVIDIA on document title [MX550 Messaging Doc.

© 2021 NVIDIA Corporation. All rights reserved. NVIDIA, GeForce, Optimus, and GeForce Experience are trademarks of registered trademarks of NVIDIA Corporation in the U.S and other countries.

6 GHz Wi-Fi 6E: Like No Wi-Fi You've Experienced Before

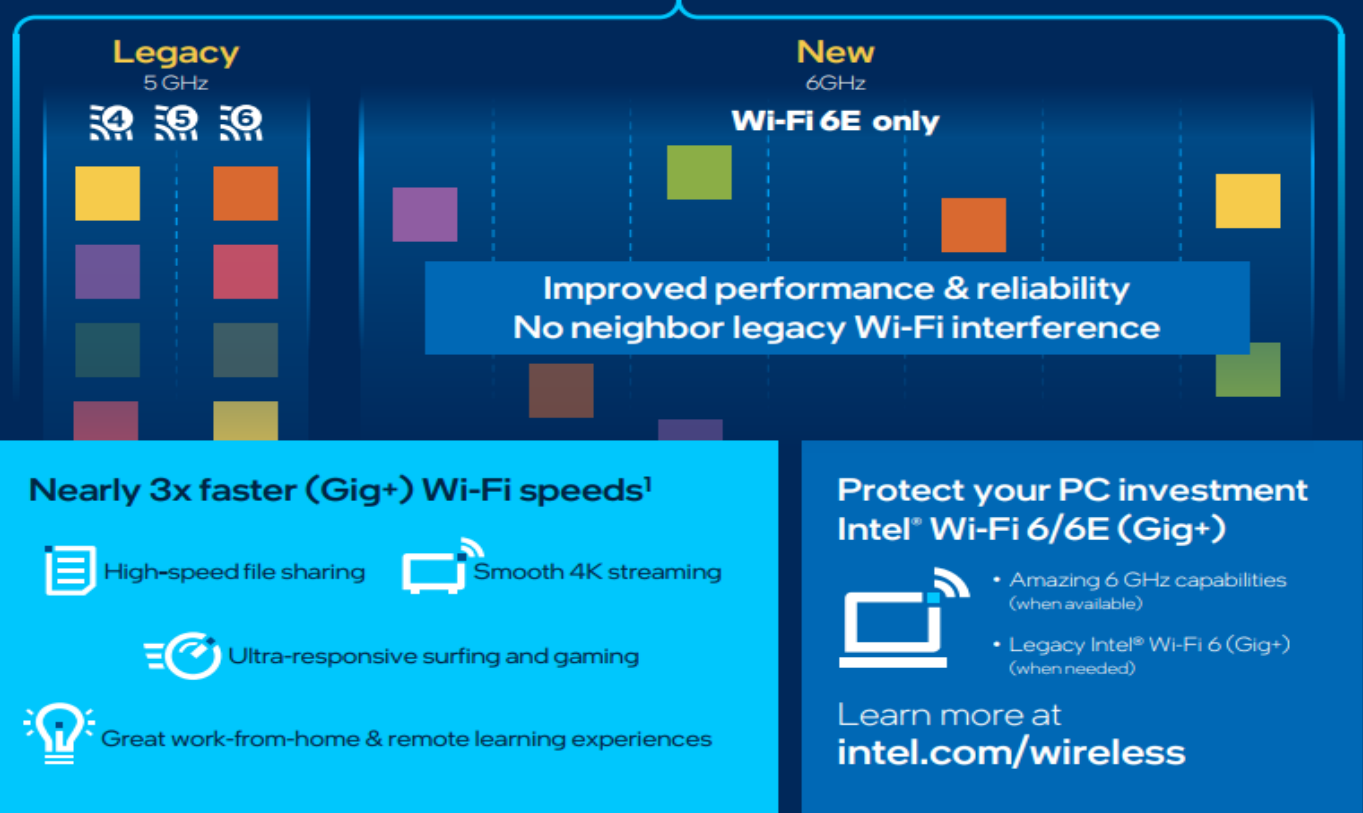
A new generation of Wi-Fi technology is coming. Don't let the small change in the name fool you: By implementing the new Wi-Fi 6E technology supporting the new **6GHz band that includes 1200MHz** of new contiguous spectrum with more Gigabit Wi-Fi options and exclusivity to Wi-Fi 6 products.

Take advantage of **the seven additional 160MHz channels** and experience **3x faster connectivity** to your local networks (Compared to Intel® Wi-Fi 5 for Home). With an Intel® and a Wi-Fi 6E router, you can easily upgrade your home network to VIP-Level status and **stream 4k videos smoothly**, quickly share large files, and collaborate seamlessly for amazing work-from-home and remote learning experiences. Same power consumption than legacy but faster

Intel® Wi-Fi 6/6E (Gig+)

Best of both worlds (Legacy + New)

Many large high-speed channels



Thermal Design

Improved Cooling

The Air inlet keyboard design upgrades its thermal performance and expels around 8-10% more heat compared to keyboard without air inlet.

Multiple cooling modes

Immediately control the speed of fan with a single touch of the shortcut “Fn+F” to switch to the mode you require: silent, normal or performance.

	Silent	Normal	Performance
Volume (dBA)	37~40	40~43	43~46
Fan Speed (rpm)	3800~4200	4200~4800	4800~5400
CPU temp (°C)	Max:80 AVG.:70	Max:90 AVG:70	Max:90 AVG:70



1 - Specifications may vary depending on model and/or region. All models subject to availability.



Silent

Normal

Performance

Xbox Game Pass Ultimate

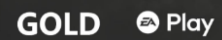
1 Month free subscription included¹

Xbox Game Pass Ultimate is Microsoft's gaming membership that provides members access to a curated catalog of over 100 high-quality console and PC games for one low monthly price. Now, with the arrival of Xbox Cloud Gaming, members can enjoy games with their friends across consoles, PCs, mobile phones, and tablets.

- ✓ Access to over 100 high-quality games for console, PC, and cloud-connected devices
- ✓ Xbox Game Studios titles the same day as release
- ✓ Exclusive member discounts and deals
- ✓ Free Perks including in-game content and partner offers
- ✓ Play games from the cloud(Beta)



Also includes:



¹⁻²The one-month free subscription to Xbox Game Pass Ultimate includes 11 pre-loaded. Subject to availability/change.

Acer TNR Solution

Improved Images

Acer TNR solution is able to capture better images by detecting and diagnosing noisy pixels and blend into other frames over time producing improved quality images in low-light conditions.



Noise Reduction

Light Source	20Lux 3000K		80Lux 3000K	
	TNR ON	TNR OFF	TNR ON	TNR OFF
MTF (sharpness)	0.626 20.62%↑	0.519	0.653 0.62%↑	0.649
SNR (signal to noise ratio)	43 19.44%↑	36	44 12.82%↑	39

The New Generation of Acer PurifiedVoice™ With AI Noise Reduction

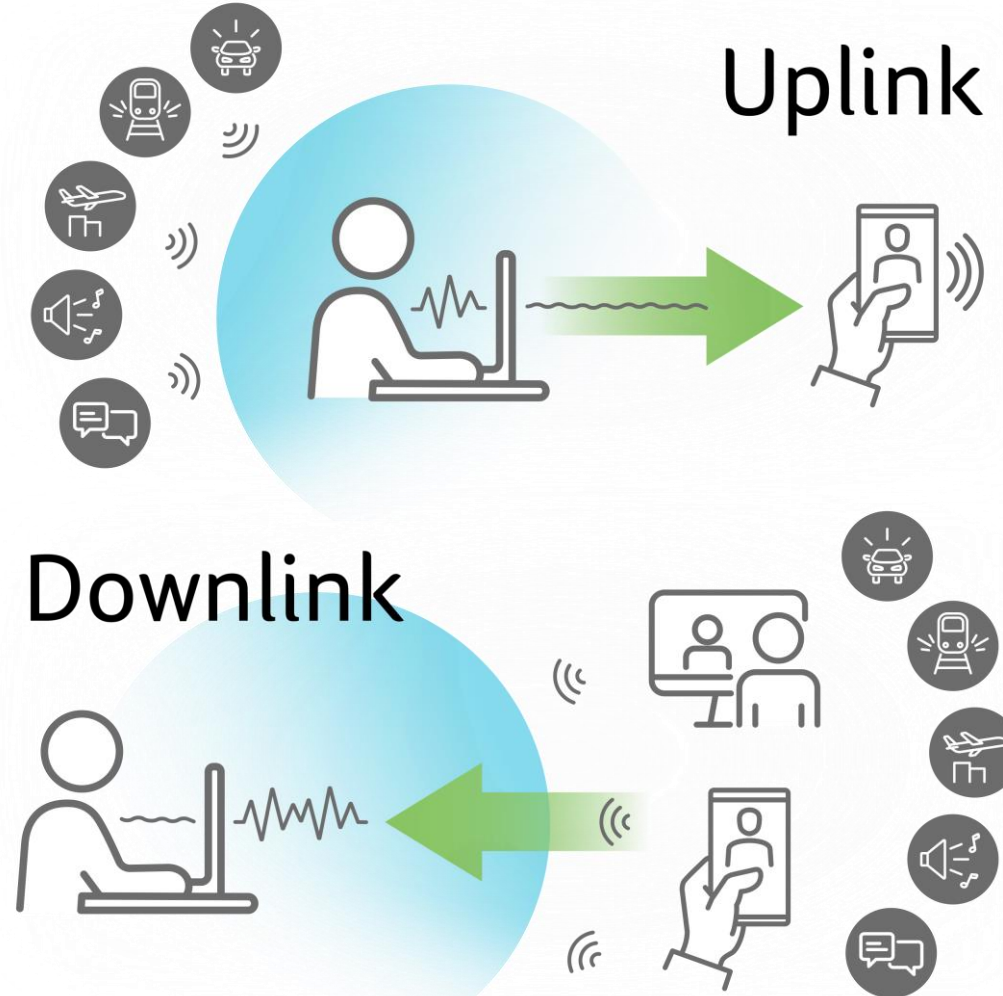
With working from home becoming increasingly commonplace, the quality of a conference call is just as relevant. Our new generation of Acer PurifiedVoice™ with AI noise reduction can now actively suppress background noise for both users and is compatible with external headphones and mics.



PurifiedVoice with AI Noise Reduction

Uplink noise suppression
Background noise from your environment is suppressed to deliver clarity at the other end, benefiting other users.

Downlink noise suppression
Background noise from other users' environments is now suppressed, benefiting you.



Modern Standby

1. Consumer Electronics On/Off Experience

Modern Standby power mode designed for quick on/off transitions; Resume to productivity 3X faster than legacy Standby.



2. Save Energy

The ability to quickly go into, and resume from, standby allows for more aggressive power management. This means that idle devices are far less often fully-powered.



3. Skype Calls

Receive Calls from the UWP Skype app while the device is in connected standby*.



4. Wake on Voice

Wake On Voice (WoV) enables the user to activate and query Windows 10 speech recognition engine from a screen off, lower power state, to a screen on, full power state by saying a specific phrase, such as "Hey Cortana". Interact with Cortana while your device is in Modern Standby mode.



* Connected standby means PC is connected to Wi-Fi while it is in Modern Standby (S0iX) state.



THE BEST IS YET TO COME